



Making Research Count (York) Newsletter

Spring 2016

What's happening in 2016?

by Angela Portz, Regional Co-ordinator

Forthcoming events

We have a diverse range of events planned for the coming few months. Whatever your area of interest, we hope to have something to suit you.

For those of you working in children's social work and social care, we have several events in the programme, including engaging fathers within social care, learning from 'Baby P' and innovative approaches to supporting young people on the edge of care.

For those working in adult social work and social care, take a look at our events on the role of social work within healthcare, and mental health social work.

And in response to many requests from delegates, we have an event on risk and decision making in social work, which should be of equal interest to recently qualified social workers and more experienced managers.

MRC is committed to enabling as many people as possible to benefit from the latest research. Please ask about our bursary scheme for volunteers and those working in small voluntary groups and charities.

Looking ahead to 2017!

It's never too early to start planning, so if you are interested in a particular topic that you would like to see on our 2016-17 programme do get in touch and let us know.

Similarly, if you are an academic or researcher and would like to use MRC to disseminate recent research findings we would love to hear from you.

Finally, did you know that MRC can come to you? If you are interested in a particular topic being presented to a whole team or department and have a suitable venue on site please talk to us about how we could facilitate an event for you.



CONTACT DETAILS

☎ 01904 321237

✉ spsw-mrc@york.ac.uk

🌐 www.york.ac.uk/spsw/research/research-impact/mrc/

🐦 <https://twitter.com/UoYMRC>

The MRC (York) Team

Angela Portz - Regional Co-ordinator

Lisa Thurlow - MRC Administrator

Martin Webber - MRC Academic Lead

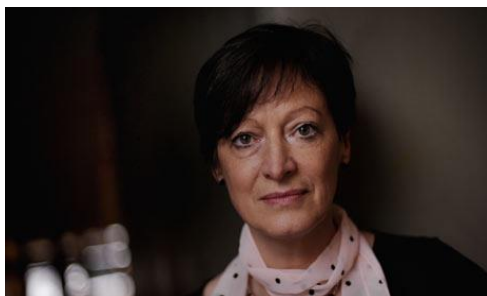
UPCOMING EVENTS

Thu 25 FEB**Developing an approach to engaging fathers within children's social care**

Gavin Swann, Head of Service, Safeguarding and Quality Assurance, London Borough of Croydon, will lead this interactive event.

Tue 8 MAR**Developing different perspectives on the social work profession with Dr. Sharon Shoesmith and Prof Andrew Cooper**

Sharon Shoesmith has recently been awarded a PhD for her thesis on the responses to the familial homicide of Baby P. At this event she will focus on what can be learned and how social workers should respond.

**Thu 14 APR****Examining the role of social work with healthcare: perspectives from international research**

Dr. David Nilsson of Kingston University London presents this session, offering a comparative review of findings regarding social work contributions within health care.

Thu 21 APR**Mental health social work with children, young people and adults; messages from research and implications for practice**

Professor Martin Webber, academic lead for Making Research Count in Yorkshire and the Humber and Director of the International Centre for Mental Health Social Research, will lead this interactive day on mental health social work.

Thu 12 MAY**Young People on the edge of care; innovative approaches to support**

Jo Dixon of the University of York will present findings of a number of recent studies that look at ways in which support can be provided to young people on the edge of care.

Thu 19 MAY**Risk and decision making in social work**

A highly interactive day considering risk-taking in social work and how research and evidence can be used to support robust decision-making.

From dissemination to successful implementation

As explored in [Martin Webber's recent book](#), "Applying research evidence in social work practice", so often obstacles within both government and organisations can make it difficult to move beyond dissemination of findings and towards successful adoption and implementation of policy-driven change.

At [University of York](#), we have a proven approach to addressing this problem, one that many professionals working for a wide range of both UK-based and international NGOs and public sector organisations have successfully undertaken. [Short courses](#) focus specifically on helping policy makers and practitioners make better use of available research evidence. These courses consider how evidence-based policy can be developed in practice, in the context of broader institutional factors that can help or hinder the successful implementation of policy-driven change.

If you want to know more, contact [Helen Chan](#) at the Department of Social Policy and Social Work (helen.chan@york.ac.uk).

<http://www.york.ac.uk/spsw/onlinestudy/>

Continuing Professional Development in

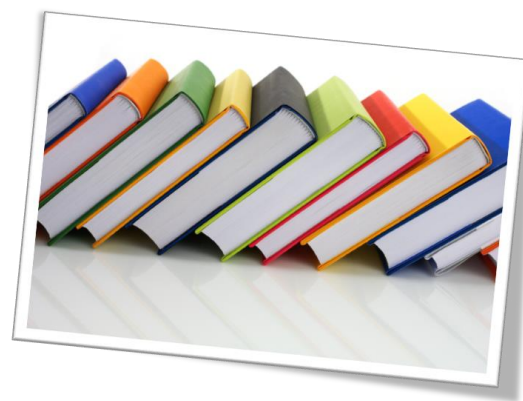
Book corner

Social Work by Carmel Halton, Fred Powell, Margaret Scanlon

Bristol, Policy Press, 2013

Continuing professional development (CPD) has become a defining issue in twenty-first century social work. There is widespread consensus in favour of CPD. But what is it? Are there discernible international trends? What are the barriers to participating in CPD? What do social workers think about and want from CPD? This book seeks to answer these questions.

Based on a survey and interviews with social work practitioners, CPD in social work offers a unique insight into the possibilities and challenges of CPD and the issues it presents for newly qualified and experienced social workers in practice. Combining the perspectives of social workers and their managers with international research,



assures its global appeal. It offers possible directions for the future of post qualifying social work education, making it essential reading for practitioners, educators, managers and policy-makers.

MORE INFO

See more at <http://www.policypress.co.uk/display.asp?k=9781447307372>